

QPD W 3PE2,5 6-10 M25 1,0 BK - Panel feed-through



1582160

<https://www.phoenixcontact.com/us/products/1582160>

Please be informed that the data shown in this PDF document is generated from our online catalog. Please find the complete data in the user documentation. Our general terms of use for downloads are valid.



Panel feed-through, QUICKON connection, number of positions: 3+PE, 690 V, 20 A, black, with QUICKON nut, external cable diameter: 6 mm ... 10 mm, assembly thread: M25, Single wires (welded-on), 2.5 mm², wires cut flat at the end, cable length: 1 m

Your advantages

- Innovative and time saving - QUICKON fast connection for time saving of up to 80 % for on-site connection
- Robust throughout: housing with IP68/IP69K and IK07 protection for a wide range of applications
- Safer connection with mechanical coding to protect against mismatching, and touch-proof protection in accordance with DIN EN 0105
- Efficient - by using panel feed-throughs, devices no longer need to be opened in order to connect cables

Commercial data

Item number	1582160
Packing unit	1 pc
Minimum order quantity	1 pc
Note	Made to order (non-returnable)
Sales key	BF50
Product key	BF6ABB
Catalog page	Page 478 (C-2-2017)
GTIN	4046356316835
Weight per piece (including packing)	167.4 g
Weight per piece (excluding packing)	165.32 g
Customs tariff number	85366990
Country of origin	DE

1582160

<https://www.phoenixcontact.com/us/products/1582160>

Technical data

Product properties

Type	QPD 4x2,5
Product type	Panel feed-through
Product family	QPD
Number of positions	4
Connection profile	3+PE
Position marking	1, 2, 3, PE
Number of connections	10
Number of connections per position	1
Coding	coded

Insulation characteristics

Overvoltage category	III
Degree of pollution	3

Connection data

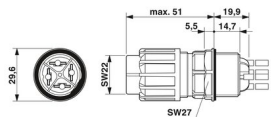
Connection technology

Connection technology	QUICKON connection
Connection system, internal	IDC connection
Frequency of connections between conductors of the same cross section	max. 10

Conductor connection

Conductor cross section flexibel	1 mm ² ... 2.5 mm ²
Conductor cross section solid	1 mm ² ... 2.5 mm ²
Connection cross section AWG	16 ... 14
Tightening torque Union nut	5 Nm
Tightening torque Locking nut	5 Nm
Wrench size Union nut	22 mm
Wrench size Locking nut	27 mm

Dimensions

Dimensional drawing	
Width	29.6 mm
Height	29.6 mm
Length	71 mm
Diameter	29.6 mm
Wrench size for mounting	27 mm

1582160

<https://www.phoenixcontact.com/us/products/1582160>

Electrical properties

Rated surge voltage (II/2)	8 kV
Rated surge voltage (III/2)	8 kV
Rated surge voltage (III/3)	6 kV
Rated current	20 A
Contact resistance	< 3 mΩ
rated voltage (II/2)	1000 V
rated voltage (III/2)	1000 V
Rated voltage (III/3)	690 V
Nominal voltage U_N	690 V
Nominal current I_N	20 A

Mechanical properties

Mechanical data

Insertion/withdrawal cycles	max. 50
-----------------------------	---------

Material specifications

Material	PA
	Cu
	Silver-plated
Flammability rating according to UL 94	V0
Material wire insulation	PVC / PE / rubber / TPE

Cable/line

Cable length	1 m
Structure of individual litz in acc. with VDE 0295 / smallest wire diameter	VDE 0295 class 1 to 6/min. 0.15 mm
External cable diameter ()	6 mm ... 10 mm
Wire diameter including insulation	2 mm ... 3.8 mm
Position marking	1, 2, 3, PE
Cable cross section	2.5 mm ²
Material wire insulation	PVC / PE / rubber / TPE

Mounting

Mounting type	Front mounting M25
Wrench size	27 mm
Connection method	Single wires

Environmental and real-life conditions

Ambient conditions

Degree of protection	IP66
	IP68 (2 m / 24 h)
	IP69K

QPD W 3PE2,5 6-10 M25 1,0 BK - Panel feed-through



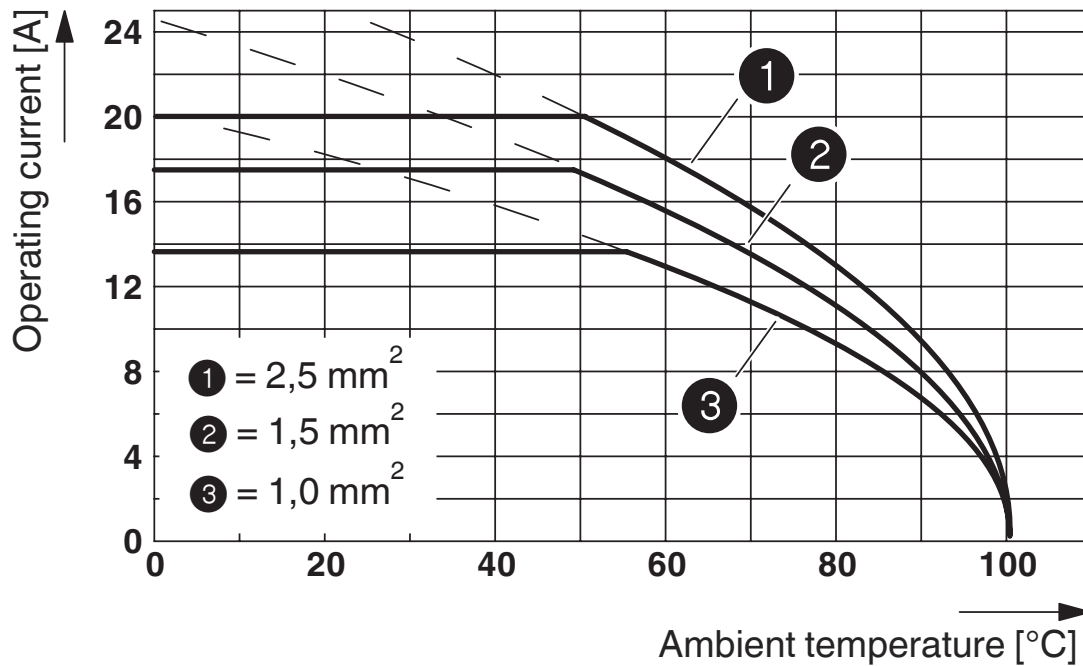
1582160

<https://www.phoenixcontact.com/us/products/1582160>

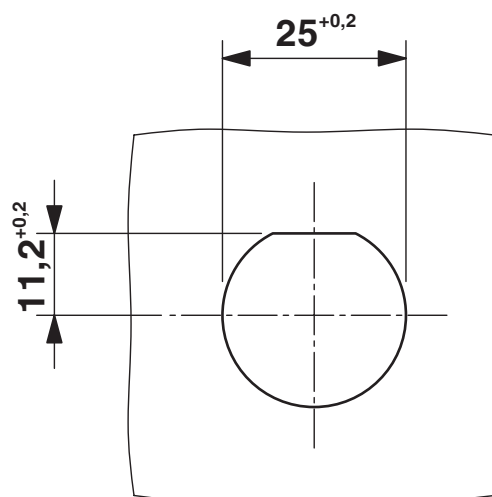
Ambient temperature (operation)	-40 °C ... 100 °C
Temperature when conductor connected	-5 °C ... 50 °C
Ambient temperature (storage/transport)	-40 °C ... 100 °C

Drawings

Diagram



Dimensional drawing



Panel cutout

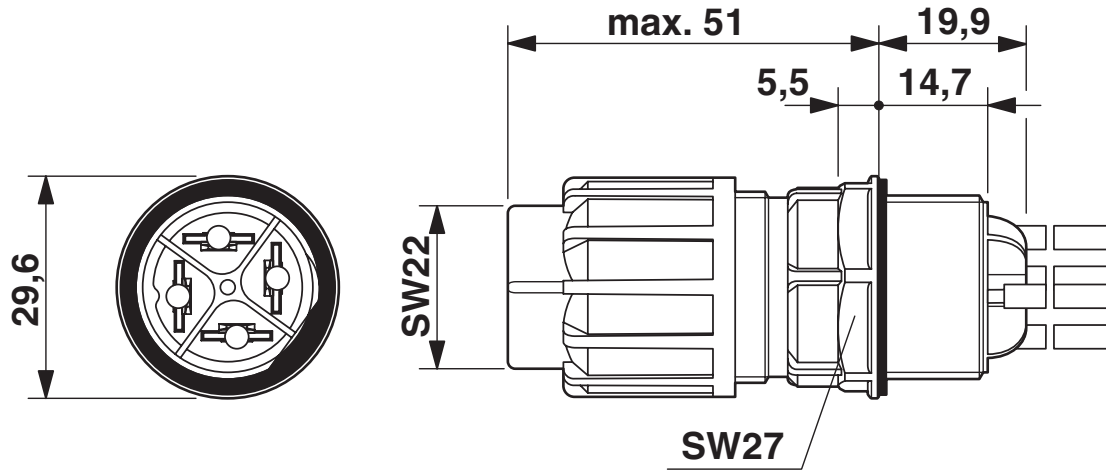
QPD W 3PE2,5 6-10 M25 1,0 BK - Panel feed-through



1582160

<https://www.phoenixcontact.com/us/products/1582160>

Dimensional drawing



1582160

<https://www.phoenixcontact.com/us/products/1582160>

Classifications

ECLASS

ECLASS-11.0	27440602
ECLASS-13.0	27440602

UNSPSC

UNSPSC 21.0	39121522
-------------	----------

QPD W 3PE2,5 6-10 M25 1,0 BK - Panel feed-through



1582160

<https://www.phoenixcontact.com/us/products/1582160>

Environmental product compliance

China RoHS	Environmentally Friendly Use Period = 50 years For information on hazardous substances, refer to the manufacturer's declaration available under "Downloads"
------------	--

QPD W 3PE2,5 6-10 M25 1,0 BK - Panel feed-through



1582160

<https://www.phoenixcontact.com/us/products/1582160>

Accessories

SEALING PLUG 10X16 RD - Closing cap

1400284

<https://www.phoenixcontact.com/us/products/1400284>

Closing cap, for threads pluggable, color: red



EMLP (13X9)R - Label

0819453

<https://www.phoenixcontact.com/us/products/0819453>



Label, Roll, white, unlabeled, can be labeled with: THERMOMARK E.300 (D)/600 (D), THERMOMARK ROLL 2.0, THERMOMARK ROLL, THERMOMARK ROLL X1, THERMOMARK ROLLMASTER 300/600, THERMOMARK X1.2, mounting type: adhesive, lettering field size: 13 x 9 mm, Number of individual labels: 500

QPD W 3PE2,5 6-10 M25 1,0 BK - Panel feed-through



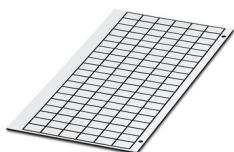
1582160

<https://www.phoenixcontact.com/us/products/1582160>

GPE 13X 9 WH - Engraving material

0806932

<https://www.phoenixcontact.com/us/products/0806932>



Engraving material, Sheet, white, unlabeled, can be labeled with: PLOTMARK, ENGRAVING UNIT, CMS-P1-PLOTTER, P1 ENGRAVING UNIT, mounting type: adhesive, lettering field size: 13 x 9 mm, Number of individual labels: 120

QPD QSK 2,5 FS - Protective cap

1582488

<https://www.phoenixcontact.com/us/products/1582488>



Plastic protective cap, for QPD-QUICKON connectors, green, with holding band, IP68

QPD W 3PE2,5 6-10 M25 1,0 BK - Panel feed-through



1582160

<https://www.phoenixcontact.com/us/products/1582160>

Q-MU M25 - Nut

1640715

<https://www.phoenixcontact.com/us/products/1640715>

Nut (plastic) to lock the contact carrier from the inside of the device

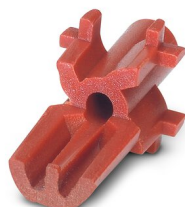


CP-QPD - Coding profile

1582459

<https://www.phoenixcontact.com/us/products/1582459>

Coding profile red, for pushing into the QUICKON dome and connector, can be positioned in 90° steps.



QPD W 3PE2,5 6-10 M25 1,0 BK - Panel feed-through



1582160

<https://www.phoenixcontact.com/us/products/1582160>

KV-DI-PG16-1XASI - Seal

1582462

<https://www.phoenixcontact.com/us/products/1582462>



Seal for one AS-i line, 17.2 x 9 mm, from NBR, black, for IP65/67 degree of protection

KV-DI-PG16-2XASI - Seal

1582464

<https://www.phoenixcontact.com/us/products/1582464>



Seal for two AS-i lines, 17.2 x 9 mm, from NBR, black, for IP65/67 degree of protection

QPD W 3PE2,5 6-10 M25 1,0 BK - Panel feed-through



1582160

<https://www.phoenixcontact.com/us/products/1582160>

QSS 22 - Socket wrench

1670206

<https://www.phoenixcontact.com/us/products/1670206>



Allen wrench, for loosening and fastening the QUICKON union nut, WAF 22 mm

Phoenix Contact 2023 © - all rights reserved

<https://www.phoenixcontact.com>

Phoenix Contact USA
586 Fulling Mill Road
Middletown, PA 17057, United States
(+717) 944-1300
info@phoenixcon.com